



MBFLEX 100



MBFLEX 100

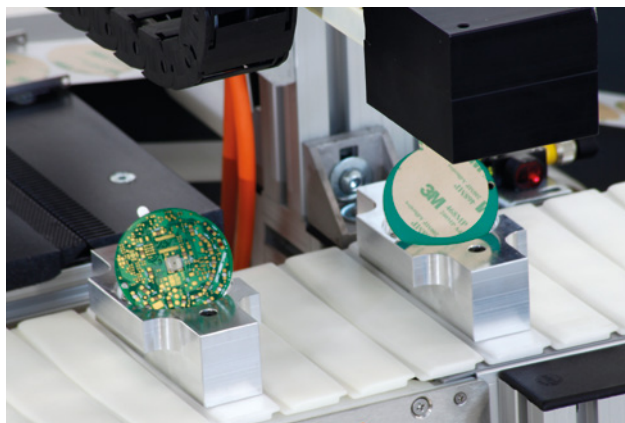
Pick & Place: semi-automatic application of die-cut adhesive



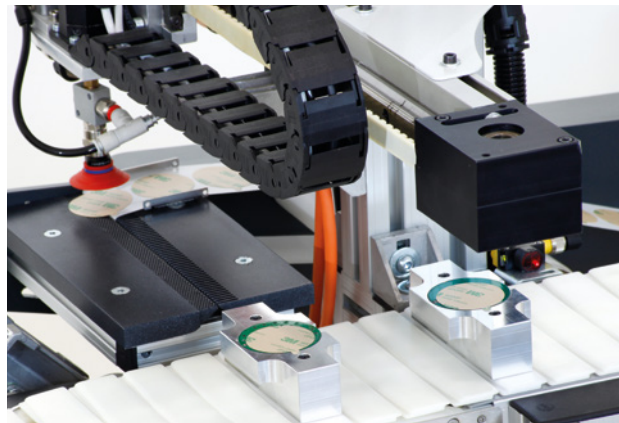
Multi-position loader that permits a continuous production cycle.



Picking and application of die-cut adhesive with dimensions from 18 to 50 mm.



The MBFLEX 100 is a semi-automatic Pick & Place for application of die-cut adhesive to PCBs or rigid surfaces.



The MBFLEX 100 delicately and precisely applies adhesive to circuit boards.

MBFLEX 100 - PICK & PLACE

- Automatic system with manual feed for application of die-cut adhesive to various surfaces consisting of:
 - Automatic distribution of single die-cut adhesive directly to the point where it is picked by the cartesian robot.
 - Two-axis cartesian robot that picks and applies the die-cut adhesive with a suction cup.
 - Bay in which to place material that will receive die-cut adhesive.
- Unit managed by integrated electronic system with a touch-screen control panel for managing parameters.
- Maximum output: 1000 pieces/hour.